

!"

\$
% & ' " " () * +, # - .

! " # \$ %

" " " "

& " _____

, \$ # / 0 1 & - 0 3
& 0 2 0 !
0 0 3 Â!òh@Đ

\$ %

_____ & ' (\$

) * +, - . * / ,

% 0 , , 1 * .

!" ##\$ %& % \$ ' () * # + , ' % \$ ' + - ! & - % + . ' + & - # # , / 0 1 2 1 1 3 2 1 4 2 2

%

"

% 0 * - / - * 2 / 0 , - 3 - * & ' (\$

5 / 1 6 1 6 1

" ') # + 7 & ! .) & - % " & ' , , # # * ' \$ 8 & % . ! # "

% 4 / - / 5 4 , + 1 , * / ,

& \$ 9 2 : (% " - % . . % "

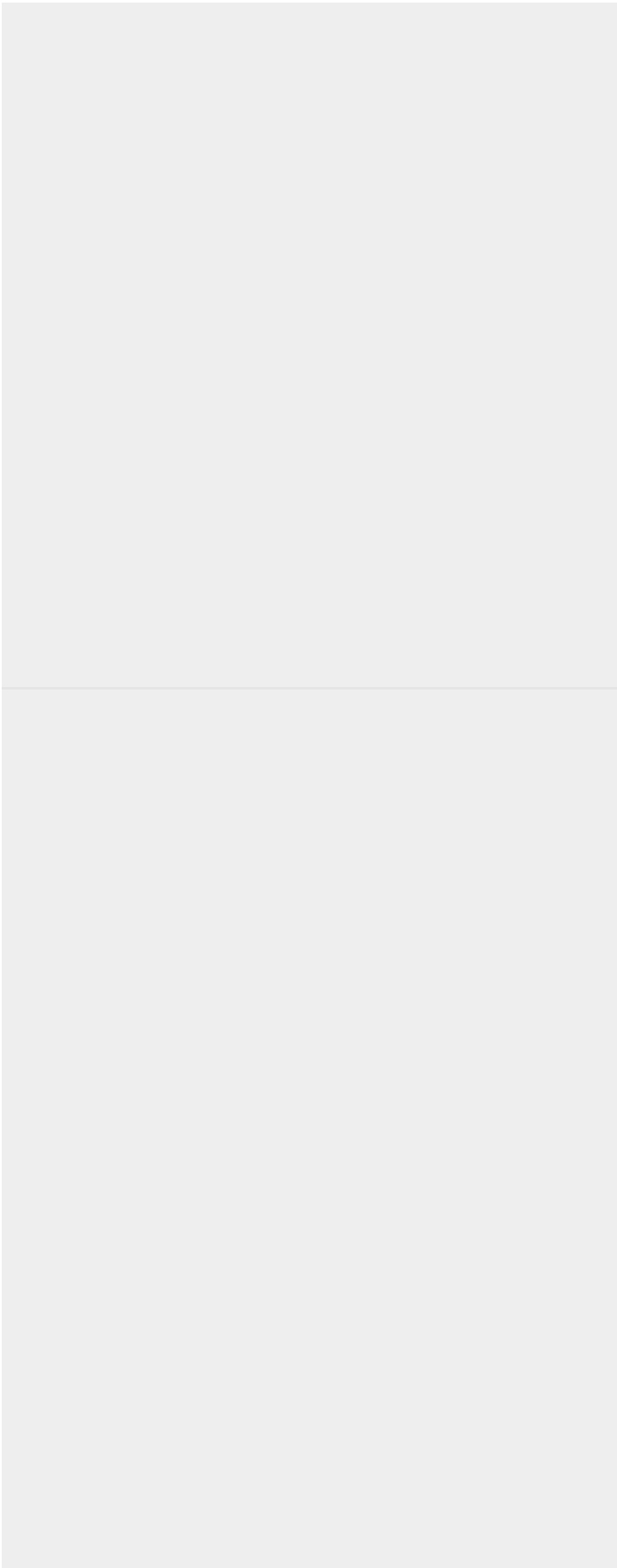
% 4 * / , + / * 1 0 * - / -

0 6 ; 6 1 1 4

% 4 * / + - / , 4 + , - / - 2 / ,

3 ; 6 1 0 1

"



A short, horizontal blue line segment is located in the lower right quadrant of the page. It is positioned to the right of the vertical gray line and below the horizontal gray line.

7 \$ ' B

' @

CD 6Am@r@

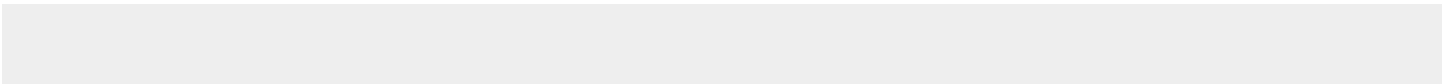
%

#

!

\$

@



+1, */ 4 - 6*/ * 7 , - 4 / - / , 2/ 4 7

% 2

,

,\$

+

-

7

7 %

,

+

%

0



m2. SCHOOL SITES

Please provide the following information for each school site:

Site	Physical Address	Phone Number	District/CSD	Grades taught for coming year (k-5, 6-9, etc.)	Served at Site for coming year (If yes, enter the appropriate grades. If no, enter No).
Site 2	433 West 204th Street New York, NY, 10034	646-665-5570	NYC CSD 6	5-8	No

m2a. Please provide the contact information for Site 2

Role	Name	Work Phone	Email
School Leader	Christine Reyes	[REDACTED]	christine_reyes@woodacademy.org
Operational Leader	Jenny Pichardo	[REDACTED]	jenny.pichardo@woodacademy.org
Compliance Contact	Jenny Pichardo	[REDACTED]	jenny.pichardo@woodacademy.org
Complaint Contact	Jenny Pichardo	[REDACTED]	jenny.pichardo@woodacademy.org
DASA Coordinator	Jaidara Martinez	[REDACTED]	jaidara.martinez@woodacademy.org
Phone Contact for After Hours Emergencies			

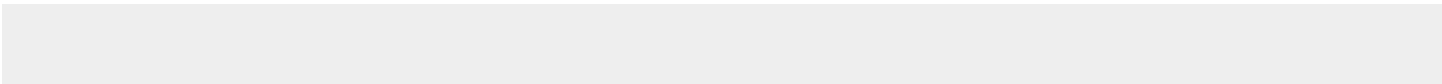
'% 0,,1 /

/

	%	"	\$;& \$	< Âlö	

--	--	--	--	--	--

' # % ' # ! \$ @



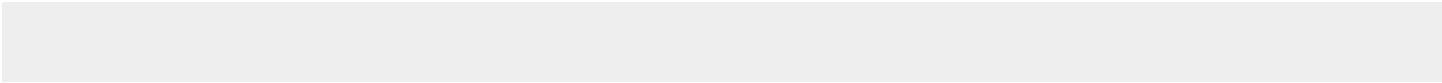
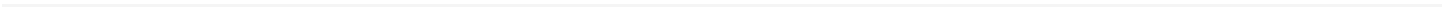
+ 1, */ 4 - 6*/ * 7 , - 4 / - / , 2/ 4 7

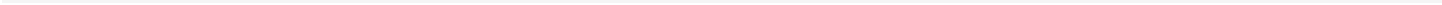
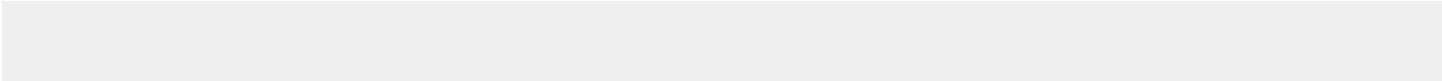
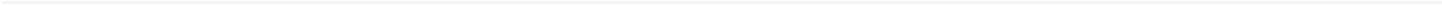
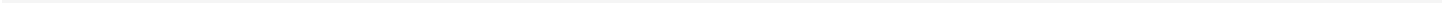
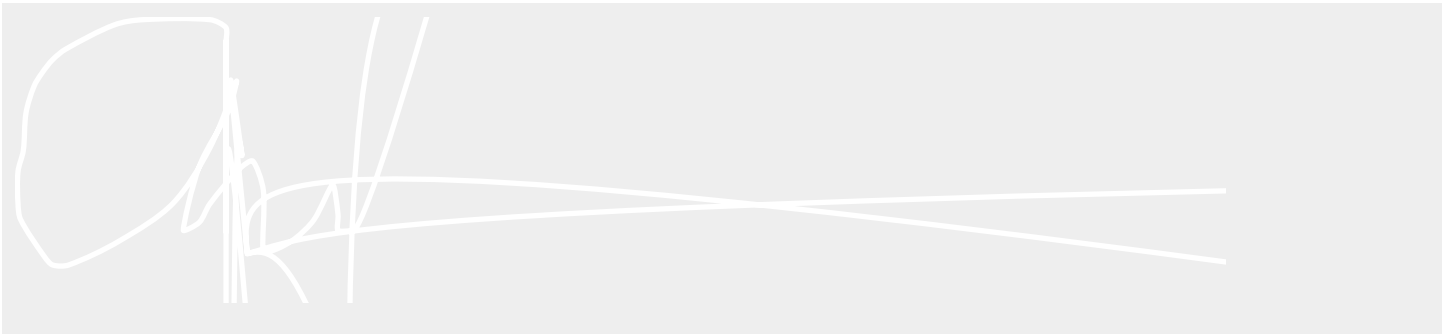
' % 2 , , \$ + -
' 7 7 %
, + % ! =

7 \$ % +
(7 ! \$(! =
(#
& (%

' , , \$

[6/BG11_iÆ1 à 00_1B2@,0](#)





)'(*

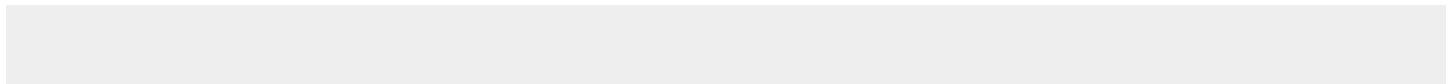
& \$ 8 % 9 8# # 1 0
+ # (3 00 0 3 .&-
0 3 00 0 3 \$ \$ %
9 8# +6%91) '.

7 - 1 ?

;, ,4 * *4 .7 +, - 1 *4 - 0 0* -/ - 0, ,1 ' D ED DD

; 7, -9 /*/ - , -/ *-4

2-1 # ?



% < 0
]< ü! •

@



Peü! \$ õm qñóA6ç.Â òApĐ à s & \$
& ÆôA'm
ò'Ó€pĐ) !VRü! Â ïC'! & \$
€Đ ° òp (Á & \$ -!V \$

* & \$'a ó1 'a & ò\$VR@ !ò!\$]< ü! I \$ @ & \$319>]TJ/T1_0 1 Tf ()Tj 1 <

% < G

B

21

2

*

@

GCD

4:00

01

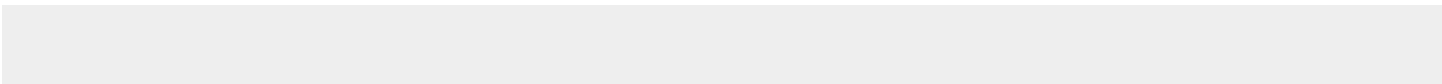
.

% < 3

: 0 0 Â ô6`Ý <@ 0 !ü! U' Ð 0

Â ô6`ÙÀ





|%, - : * 3 */ , : , * 1

+

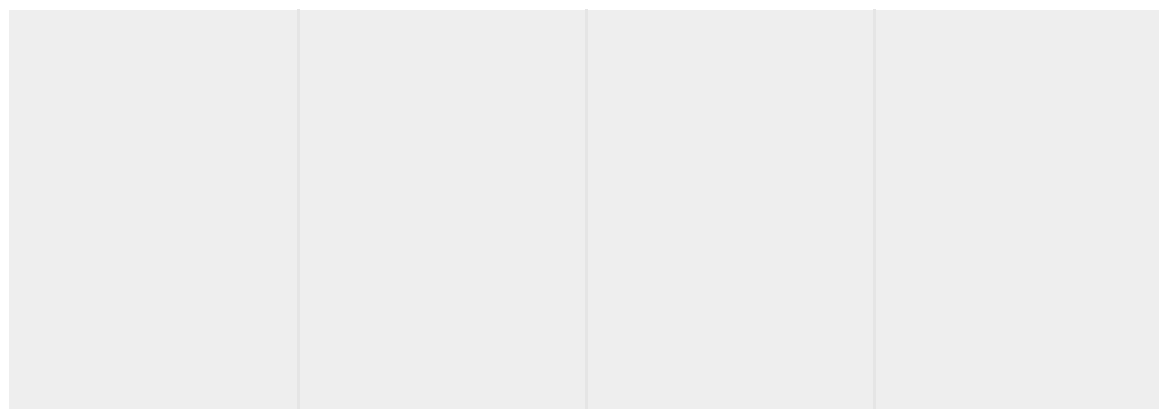
!

(

8

?

•



)' (* " /' (

> % 9 4

\$

0

3

\$

\$ 3 " "

! 1 2 1 2

" " " "

/ * >

& " % +

, \$ 0 ? @ 0 - & ") " "

• % .' (" /!. 0 0/! * A 0; /

•)' (* " (- ; A ;

0 \$ \$ A; 0 0 & \$ /0
\$ 0 \$ & \$ 00 +; \$ 0 3 \$.

- & & €•0Đ ò U

; € Q0

Board of Trustees announce who other parents are or non-voting members

Entry & Eligible

- SUNY-AUTHORIZED charter members are required to provide information for VOTING and NON-VOTING Trustees
- REGENTS, ANCESTRAL, and BIRTHRIGHT MEMBERS are required to provide information for all VOTING and NON-VOTING Trustees

INWOC BOARD ROLES: 1. 2019-2020 Board Member Information

1. 2019-2020 Board Member Information

Trustee Number	Trustee Name and Email Address	Position on the Board	Current Affiliation	Current By-Laws (Y/N)	Number Served	Current Term (MM/DD/YYYY)	Current Term (MM/DD/YYYY)	Attended 2019-2020
1	Tomas Almonte	Chair	Finance/Executive			07/01/2019	06/30/2020	19
2	Jay Patrick	Vice Chair	Fundraising, Executive	Yes	4	07/01/2019	06/30/2020	11
3	Benjamin Wisner	Treasurer	Finance, Facilities, Executive	Yes	2	07/01/2019	06/30/2020	11
	Elyssa							

%

'••

G••

d P

\$

' ,
, ; (,

*/ :,-7)% 12 + 6 2 -/ + 4 / * 0 - .*/0 .*/ ((,. 2/ -
 (/ 0 ,1,:7 , - *- - * 4 / 0 *1 42 */ , %

* .' @ 5 /1 6 1 6 1	
* .' /1 6 1 6 1 5	
* .' . % @ 5 /1 6 1 6 1	
* .' @ Â!ò 1wUÐ @ / 1 1 6 1 @	

*/ :,-7 +A/,/*1 +/ ,2 / ,+ *11/ * 0 -

	*.' &
. & *	G 2



/ ? %

! + / % * "

" " " "

& % .'(" /!. 0 0/! * " /' (

> ") " " / % * " 6 - 4

,

2 / C ") " D 1 0 *)" 8 @

! 7 "

" # " "

/ 0 \$ # 1

& "

E & 3 0 '3 " " /0 & \$ \$ & \$ 0 3 \$ Â ótPD ö \$ 1 T



0 40 2

4

f " €) € 8 0 A Â € p D' c @ t 0 P 0 %

[Grey shaded box]

D i s c l o s u r e o f F i n a n c i a l I n t e r e s t b y C u r r e n t o r P r o p o s e d B o a r d o f
T r u s t e e s M e m b e r

Name:

Name of Charter School Education Corporation (the Charter School Name , if the charter school is the only school operated by the education corporation):

1. List all positions held on the education corporation Board of Trustees ("Board") (e.g. president, treasurer, parent representative).

2. Are you an employee of any school operated by the education corporation?
____ Yes ____ No

If Yes , for each school, please provide a description of the position(s) you hold, your responsibilities, your salary and your start date.

(!)

3. Are you related, by blood or marriage, to any person employed by the school? (:

If Yes , please describe the nature of your relationship and how this person could benefit from your participation.

(!

4. Are you related, by blood, marriage, or legal adoption/guardianship, to any student currently enrolled in the school? (:

If Yes , please describe the nature of your relationship and how this person could benefit from your participation.

(!

5. Are you related, by blood or marriage, to any person that could otherwise benefit from your participation as a board member of this school? (:

—

Disclosure of Financial Interest by a Current or Proposed Board of
Trustee s Member

Name:

Kathleen Mangual

Name of Charter School Education Corporation (the Charter School Name ,
if the charter school is the only school operated by the education
corporation) :

Inwood Academy for Leadership

1. List all positions held on the education corporation Board of Trustees
("Board") (e.g. president, treasurer, parent representative).

Board

2. Are you an employee of any school operated by the education corporation?
____ Yes x No

If Yes, for each school, please provide a description of the position(s) you
hold, your responsibilities, your salary and your start date.

3. Are you related, by blood or marriage, to any person employed by the school?
No.

If Yes, please describe the nature of your relationship and how this person
could benefit from your participation.

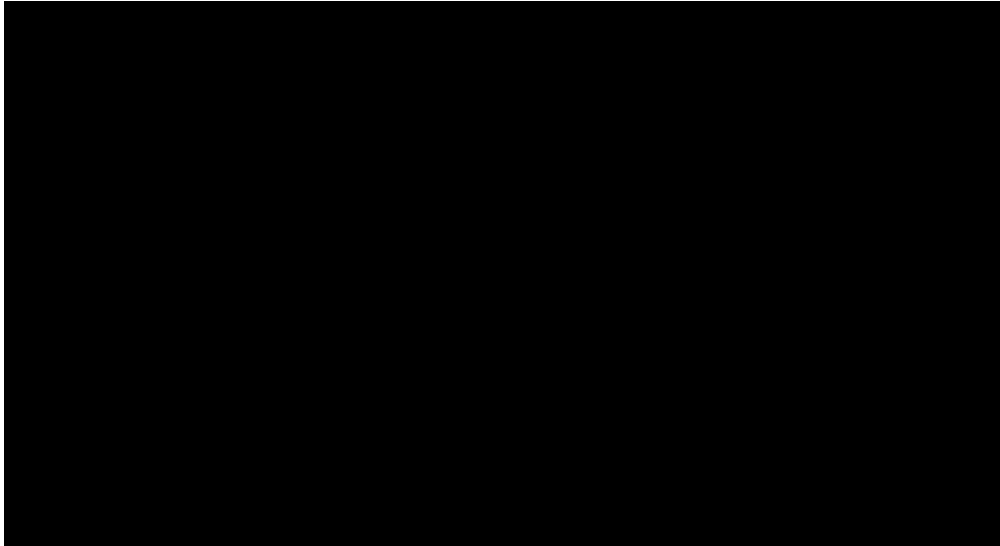
4. Are you related, by blood, marriage, or legal adoption/guardianship, to any
student currently enrolled in the school? No.

If Yes, please describe the nature of your relationship and how this person
could benefit from your participation.

5.

8. Identify each individual, business, corporation, union association, firm, partnership, franchise holding company, joint-stock company, business or real estate trust, non-profit organization, or other organization or group of people doing business with the school(s) operated by the education

doing business with the school(s) operated by the education



last revised 06/8/2020

Disclosure of Financial Interest by a Current or Proposed Board of
Trustee s Member

Name:

Tomas Almonte

Name of Charter School Education Corporation (the Charter School Name ,
if the charter school is the only school operated by the education
corporation):

Inwood Academy

1. List all positions held on the education corporation Board of Trustees
(Board) (e.g. president, treasurer, parent representative).

Chair

2. Are you an employee of any school operated by the education corporation?
 Yes No

If Yes, for each school, please provide a description of the position(s) you
hold, your responsibilities, your salary and your start date.

Na

3. Are you related, by blood or marriage, to any person employed by the school?
No

If Yes, please describe the nature of your relationship and how this person
could benefit from your participation.

Na

4. Are you related, by blood, marriage, or legal adoption/guardianship, to any
student currently enrolled in the school? No

If Yes, please describe the nature of your relationship and how this person
could benefit from your participation.

Na

5. Are you related, by blood or marriage, to any person that could otherwise
benefit from your participation as a board member of this school? No

8. Identify each individual, business, corporation, union association, firm, partnership, franchise holding company, joint-stock company, business or real estate trust, non-profit organization, or other organization or group of people doing business with the school(s) operated by the education corporation and in which such entity, during the time of your tenure as a trustee, you and/or your immediate family member(s) or person(s) living in your house had a financial interest or other relationship. If you are a member, director, officer or employee of an organization formally partnered with the school(s) that is/are doing business with the school(s) through a management or services agreement, please identify only the name of the organization, your position in the organization, and the relationship between such organization and the school(s). If there was no financial interest, write None.

Organization	Nature of			
None	None	None	None	Nor

7/31/2020

Disclosure of Financial Interest by a Current or Proposed Board of
Trustee s Member

Name:

Kathleen Smith

Name of Charter School Education Corporation (the Charter School Name ,
if the charter school is the only school operated by the education
corporation):

Inwood Academy for Leadership

1. List all positions held on the education corporation Board of Trustees
(Board) (e.g. president, treasurer, parent representative).

Academic Committee Chair

2. Are you an employee of any school operated by the education corporation?
 Yes No

If Yes, for each school, please provide a description of the position(s) you
hold, your responsibilities, your salary and your start date.

None

3. Are you related, by blood or marriage, to any person employed by the school?
No

If Yes, please describe the nature of your relationship and how this person
could benefit from your participation.

None

4. Are you related, by blood, marriage, or legal adoption/guardianship, to any
student currently enrolled in the school? No

If Yes, please describe the nature of your relationship and how this person
could benefit from your participation.

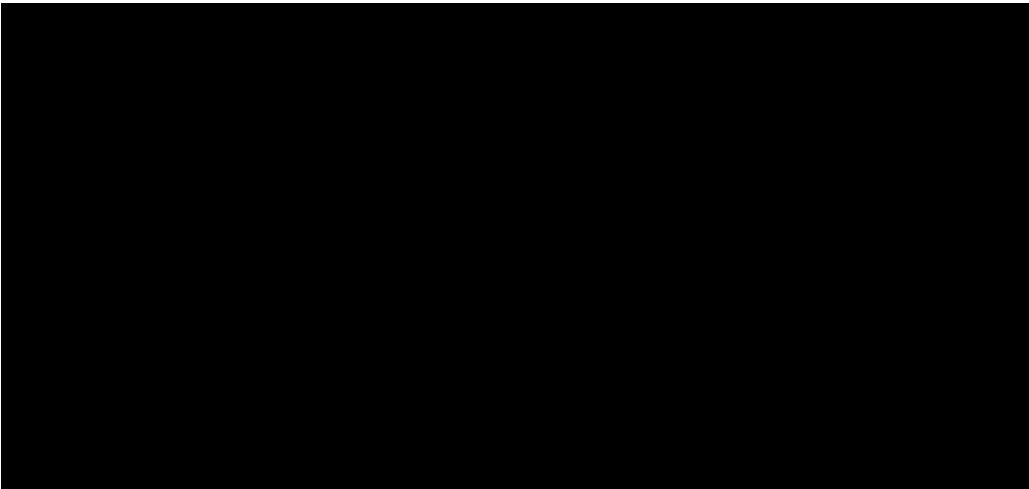
None

5. Are you related, by blood or marriage, to any person that could otherwise
benefit from your participation as a board member of this school? No

8. Identify each individual, business, corporation, union association, firm, partnership, franchise holding company, joint-stock company, business or real estate trust, non-profit organization, or other organization or group of people doing business with the school(s) operated by the ☺ _____

None	None	None	None	Nor

7/31/2020



last revised 06/8/2020

Disclosure of Financial Interest by a Current or Proposed Board of
Trustee s Member

Name:

Steve Mlynar

Name of Charter School Education Corporation (the Charter School Name ,
if the charter school is the only school operated by the education
corporation):

Inwood Academy of Leadership

1. List all positions held on the education corporation Board of Trustees
(Board) (e.g. president, treasurer, parent representative).

Treasurer

2. Are you an employee of any school operated by the education corporation?
 Yes No

If Yes, for each school, please provide a description of the position(s) you
hold, your responsibilities, your salary and your start date.

N/A

3. Are you related, by blood or marriage, to any person employed by the school?
No

If Yes, please describe the nature of your relationship and how this person
could benefit from your participation.

N/A

4. Are you related, by blood, marriage, or legal adoption/guardianship, to any
student currently enrolled in the school? No

If Yes, please describe the nature of your relationship and how this person
could benefit from your participation.

N/A

5. Are you related, by blood or marriage, to any person that could otherwise
benefit from your participation as a board member of this school? No

—

None	None	None	None	Nor

7/31/2020

—



Four horizontal lines are positioned to the right of the redacted area, suggesting a list or a set of input fields. The lines are evenly spaced and extend to the right edge of the page.

last revised 06/8/2020

Disclosure of Financial Interest by a Current or Proposed Board of Trustee s Member

Name:

Elyssa Siminerio

Name of Charter School Education Corporation (the Charter School Name , if the charter school is the only school operated by the education corporation):

Inwood Academy for Leadership

1. List all positions held on the education corporation Board of Trustees (Board) (e.g. president, treasurer, parent representative).

Secretary

2. Are you an employee of any school operated by the education corporation?
 Yes No

If Yes, for each school, please provide a description of the position(s) you hold, your responsibilities, your salary and your start date.

NA

3. Are you related, by blood or marriage, to any person employed by the school?
No

If Yes, please describe the nature of your relationship and how this person could benefit from your participation.

NA

4. Are you related, by blood, marriage, or legal adoption/guardianship, to any student currently enrolled in the school? No

If Yes, please describe the nature of your relationship and how this person could benefit from your participation.

NA

5. Are you related, by blood or marriage, to any person that could otherwise benefit from your participation as a board member of this school? No

8. Identify each individual, business, corporation, union association, firm, partnership, franchise holding company, joint-stock company, business or real estate trust, non-profit organization, or other organization or group of people doing business with the school(s) operated by the education corporation and in which such entity, during the time of your tenure as a trustee, you and/or your immediate family member(s) or person(s) living in your house had a financial interest or other relationship. If you are a member, director, officer or employee of an organization formally partnered with the school(s) that is/are doing business with the school(s) through a management or services agreement, please identify only the name of the organization, your position in the organization, and the relationship between such organization and the school(s). If there was no financial interest, write None.

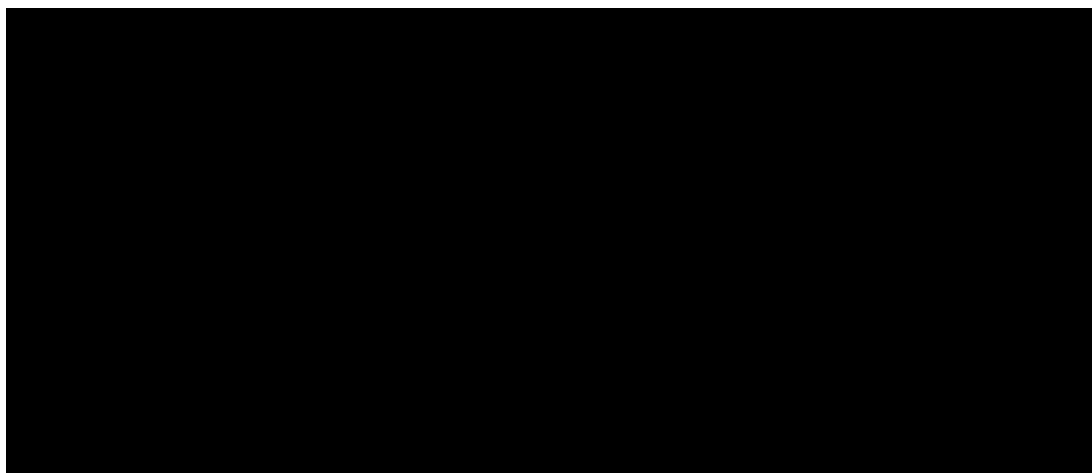
Organization conducting business with the school (s)	Nature of business conducted	Approximate value of the business conducted	Name of Trustee and/or immediate family member of household holding an interest in the organization conducting business with the school (s) and the nature of the interest	Steps taken to avoid conflict of interest
None	NA	NA	NA	N

7/30/2020

Signature

Date

Please note that this document is considered a public record and, as such, may be made available to members of the public 9 177.pba664 347.33347.33J ETu-48 (o)-3 (s (b)n(a).



last revised 06/8/2020

Disclosure of Financial Interest by a Current or Proposed Board of Trustee s Member

Name:

Name of Charter School Education Corporation (the Charter School Name ,
if the charter school is the only school operated by the education
corporation):

1. List all positions held on the education corporation Board of Trustees
(Board) (e.g. president, treasurer, parent representative).

2. Are you an employee of any school operated by the education corporation?
___ Yes ___ No

If Yes, for each school, please provide a description of the position(s) you
hold, your responsibilities, your salary and your start date.

3. Are you related, by blood or marriage, to any person employed by the school?

If Yes, please describe the nature of your relationship and how this person
could benefit from your participation.

4. Are you related, by blood, marriage, or legal adoption/guardianship, to any
student currently enrolled in the school?

If Yes, please describe the nature of your relationship and how this person
could benefit from your participation.

5. Are you related, by blood or marriage, to any person that could otherwise
benefit from your participation as a board member of this school?

8. Identify each individual, business, corporation, union association, firm, partnership, franchise holding company, joint-stock company, business or real estate trust, non-profit organization, or other organization or group of people doing business with the school(s) operated by the education corporation and in which such entity, during the time of your tenure as a trustee, you and/or your immediate family member(s) or person(s) living in your house had a financial interest or other relationship. If you are a member, director, officer or employee of an organization formally partnered with the school(s) that is/are doing business with the school(s) through a management or services agreement, please identify only the name of the organization, your position in the organization, and the relationship between such organization and the school(s). If there was no financial interest, write None.

Organization	Nature of			
N/a	N/a	N/a	N/a	N/

7/30/2020



la

—

—



last revised 06/8/2020

Disclosure of Financial Interest by a Current or Proposed Board of Trustee s Member

Name:

Name of Charter School Education Corporation (the Charter School Name ,
if the charter school is the only school operated by the education
corporation):

1. List all positions held on the education corporation Board of Trustees
(Board) (e.g. president, treasurer, parent representative).

2. Are you an employee of any school operated by the education corporation?
___ Yes ___ No

If Yes, for each school, please provide a description of the position(s) you
hold, your responsibilities, your salary and your start date.

3. Are you related, by blood or marriage, to any person employed by the school?

If Yes, please describe the nature of your relationship and how this person
could benefit from your participation.

4. Are you related, by blood, marriage, or legal adoption/guardianship, to any
student currently enrolled in the school?

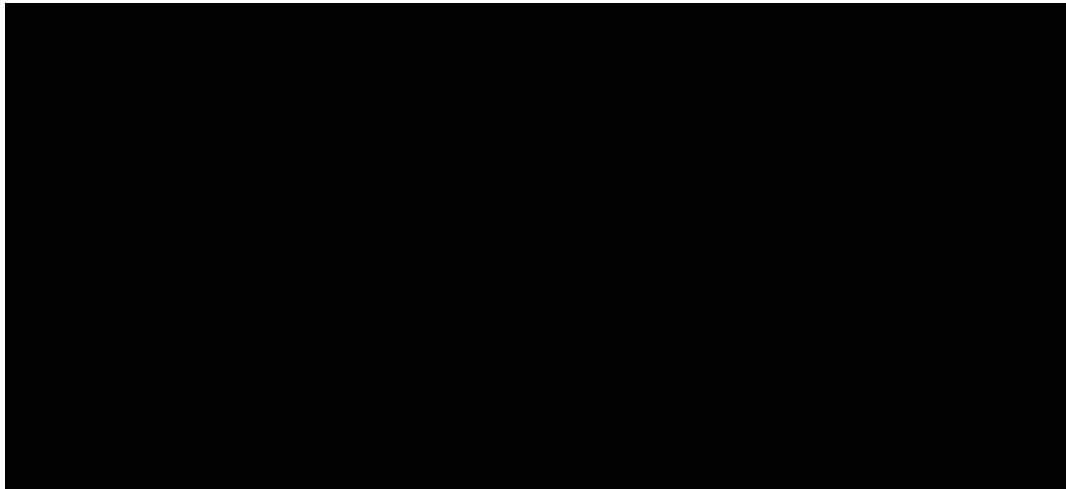
If Yes, please describe the nature of your relationship and how this person
could benefit from your participation.

5. Are you related, by blood or marriage, to any person that could otherwise
benefit from your participation as a board member of this school?

8. Identify each individual, business, corporation, union association, firm, partnership, franchise holding company, joint-stock company, business or real estate trust, non-profit organization, or other organization or group of people doing business with the school(s) operated by the education corporation and in which such entity, during the time of your tenure as a trustee, you and/or your immediate family member(s) or person(s) living in your house had a financial interest or other relationship. If you are a member, director, officer or employee of an organization formally partnered with the school(s) that is/are doing business with the school(s) through a management or services agreement, please identify only the name of the organization, your position in the organization, and the relationship between such organization and the school(s). If there was no financial interest, write None.

None	None	None	None	None

7/30/2020



last revised 06/8/2020

Disclosure of Financial Interest by a Current or Proposed Board of Trustees
Member

Name:

Brooke Girley

Name e47 T42[()-2946.8 (EMI3e0 707 T Bbhare -9.617 -2 0 9s___Sc()-499907j E

—

--	--	--	--	--

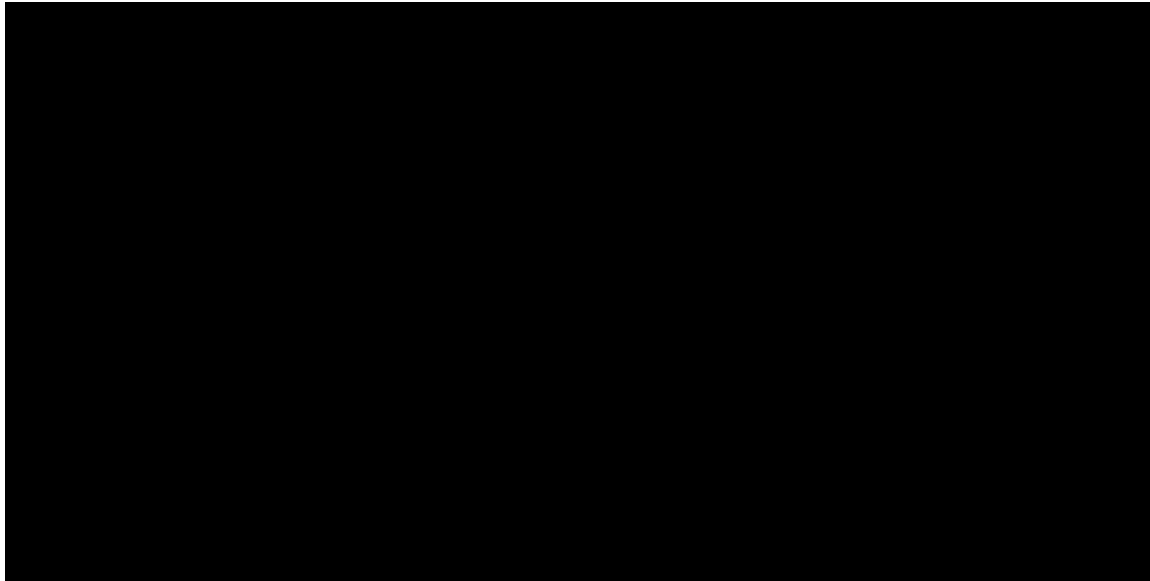
/s/ Brooke Girley

7-30-20

Signature

Date

Please note that this document is considered a public record and, as such, may be made available to members of the public upon request under the Freedom of Information Law. Personal contact information provided below will be redacted.



!"#\$%&#()*+*,-.\$% /-0()#0*12 . 3'()-0*&(*4(&5&#)6 7&.(6*&+*
8(#0))#*9):1)(*

;:)<*

=====>.#&-*3(."?)*@.(("#=====*

;:) &+*3A.(0)(*B\$A&&% C6'\$0"&- 3&(5&(.0"&- D0A) 3A.(0)(*B\$A&&% ;:)E
"+* 0A)\$A.(0)(*#\$A&&%* "#* 0A)* &-%2*#\$A&&%* &5).(0)6* 12* 0A)*)6'\$0"&-
\$&(5&(.0"&-F<*

=====/-G&&6 H\$.6):2 +&(l).6)(#A"5=====*

JK*!"#\$% &"% ()#"")*#% +,'-% \$%&-%./&\$")*% /)0(0&\$")*% 1)&0-%)2% 30.#\$,,%
451)&0-67 4,898%(0,#"-,*\$: \$0,&#.0,0: (&0,*\$ 0,(0,#,*\$&\$";,78%

7&.(6 9):1)(*

9):1)(*&+*0A) H\$.6):"\$ 3&::"00))*

9):1)(*&+*0A) @':.- L)#&'(\$)# 3&::"00))*

?-"Z k-6\$ -)## *#\$	55(&[".:0)*V.%')*&+* 0A)* 1'#"-)##* \$&-6'\$0)6*	;.:)*&+*8('#0))* .-6T&(*"::)6".0)* +.: "%2*.):1)(*&+* A&'#)A&%6*A&%6" .-.* "-0)()#0*" -*0A &(?.-"Z.0"9 \$&-6'\$0"-?*1#-)##* G"0A*0A)*A&&%D#F* 0A)* (*&+*0A)* -0)()#0*	B0)5#* 0.U)-* 0&* .V&"6* \$&-+%"\$0*& "-0)()#0*
*			

&\$11")2\$ #4&- * &"#\$6#*7%&%1\$2#B".84

Disclosure of Financial Interest by a Current or Proposed Board of
Trustee s Member

Name:

Benjamin R Wilson

Name of Charter School Education Corporation (the Charter School Name ,
if the charter school is the only school operated by the education
corporation):

Inwood Academy

1. List all positions held on the education corporation Board of Trustees
(Board) (e.g. president, treasurer, parent representative).

Board

2. Are you an employee of any school operated by the education corporation?
 Yes No

If Yes, for each school, please provide a description of the position(s) you
hold, your responsibilities, your salary and your start date.

None

3. Are you related, by blood or marriage, to any person employed by the school?
No

If Yes, please describe the nature of your relationship and how this person
could benefit from your participation.

None

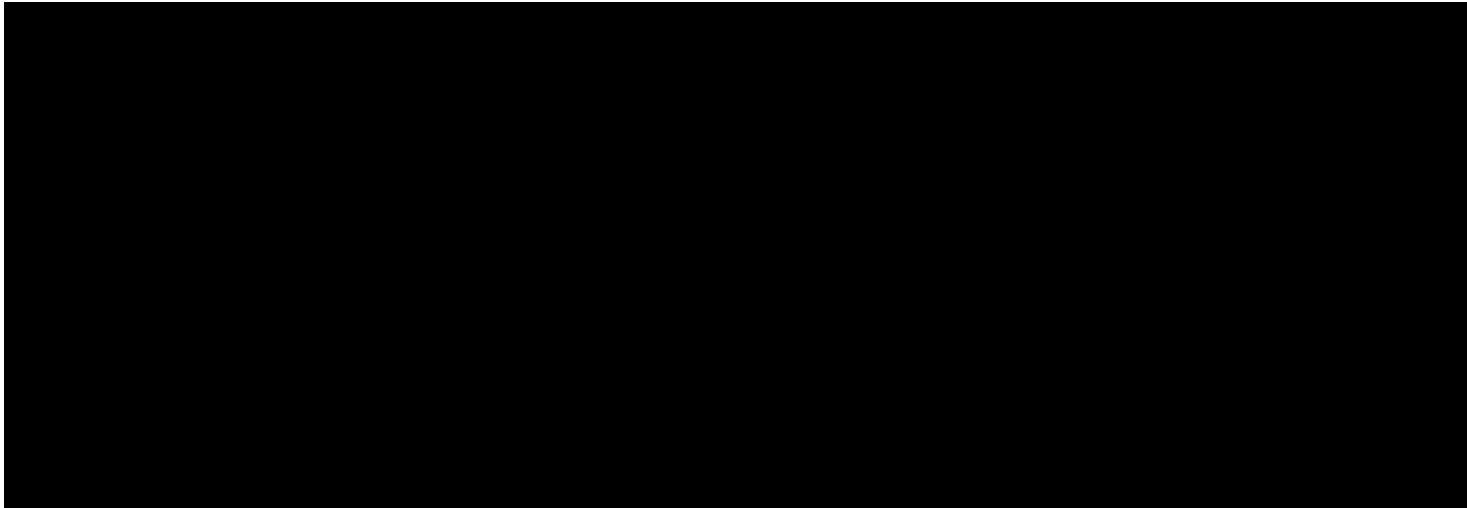
4. Are you related, by blood, marriage, or legal adoption/guardianship, to any
student currently enrolled in the school? No

If Yes, please describe the nature of your relationship and how this person
could benefit from your participation.

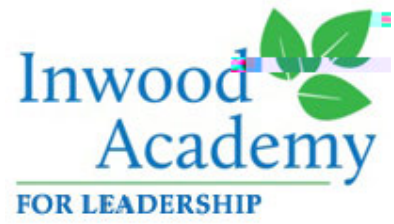
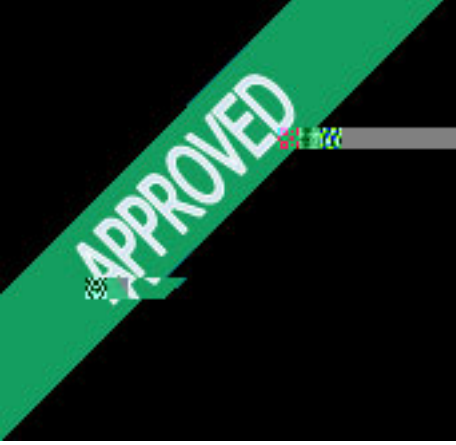
None

5. Are you related, by blood or marriage, to any person that could otherwise
benefit from your participation as a board member of this school? No

—



last revi



, Q Z R R G



, Q Z R \$ % G D G H I R U H D G H U & / K D L S W F H K R R O

0 L Q X W H V

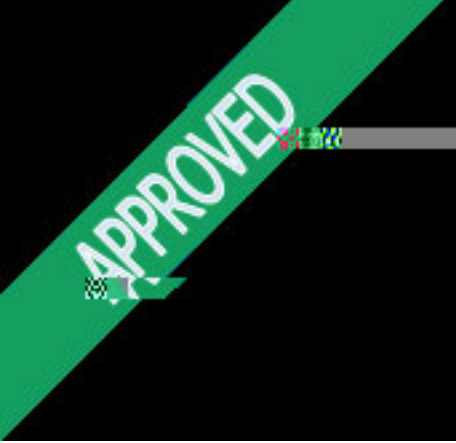
\$ X J X % W D U H G H W L Q J

' D W D H Q G L P H
7 X H V G \$ U X V W D W 3 0

/ R F D W L R Q
W Y H

7 U X V W B U H H W H Q W
% * L U O % \ A L O V R U H P R W G L P L Q H \$ D P R Q W H

5DKVDSUR YIDGHSR DRWHY HOR SZPRIONV GH ULZDFO XGHLDDOOXVWHHV
)XQGUD3V DQSP SO B VSGKV DZLODOWLXSG LYRIGXVZQVMXVWRHV
UHYLHZ H & W HO HE U D W B R Q PLKV E I H H Q UPWGODRSUREDDORFK
HYHQWLH Q CQZR \$ EDGHIRVHDGHUZMLKRSQYH QID U6HISWH RVRHU
GLVF & V R DPLMV I RHO HE U3LSE Q X 630VLDQVBDGFMUR&A3556R&Rj /A Q 0 1 0 6 4 8 1 0



, Q Z R \$ I G D G H I R U H D G H U & K D L S W F H K R R O

0 L Q X W H V

6 H S W H P % E R D U H G H W L Q J

' D W H Q G L P H
7 X H V G D S W H P E H U D W 3 0

/ R F D W L R Q
W E Y H

7 U X V W H U H W H Q W
% * L U O % \ A L O V R U H P R W H L P L Q H \$ O P R Q W B U U L W P R W 3 D W U L G R L W K
5 R V H Q W K D O

7 U X V W S H E W H Q W
7 \$ O P R Q W H

* X H V W U H V H Q W
\$ O \ V : H D Y H U 5 H \ H V D J H Q Q D 3 L F K D U G R Q G R 5 D W D K D 6 W H O \ H Q D U
+ R H N V W U D

, 2 S H Q L, Q W H P V

\$ 5 H F R \$ G W H Q G D O G H V W V

% & D O C H H W W R U G H U
- 3 D W U F D O P H G H W R L Q J E R D R U X V R M Q Z R I G D G H I R U H D G H U V K L S
& K D U 6 W F H K R R R D U G H Q U X H V G D S # 3 0 D W W E Y H

& \$ S S U R O Y L Q X W H V
0 5 R V H Q W K G P R W M F C S U R Y G X W H R W K S K J X % W D U H G H W R Q J
\$ X J X % W D U H G H W R Q J
- \$ O P R Q W F H R Q W G H R W L R Q
7 K H E R D U 2 7 (' X Q D Q L P W R S S U W K H R W L R Q

, , % R D U B P P L W M I S R U W V

- 3DWVKNLGHYHORS886DQWVROORZRSRICEHKBOMK)KQGUDLVLQJ
7DV)NRUFHQDO)XQGUD30DOH Z,\$FDOHGGDDODVFWLYLWLHV
%RDSJGUWLFLESDXLRQJHDJHP3HODVVKVYDQHWXGSLYRKHVQDJV
ZLWKPETHU\$/ <HDFHOHEUDWDRD)ZHSURFX5,6(
&DPSDLJQ

(6 L P L Q P I D G R P R W M F G M R X K H G H W L Q J
- 3 D W U L F F N R Q W K P R W L R Q
7 K H E R D Q Z (' X Q D Q L P W B S S U R Y K H R W L R Q
7 K H E H L Q R X U W E K H U L Q W H W U D Q V D R S H R Q W L R X D G M H F R Q G H G
D Q S S U R W K P H H W Z L Q D G M R X D M H S O

5 H V S H F W X E O D W W H G
(6 L P L Q H U L R

5 0 D U W D Q I E J O H M S I D R Y I D G H S G D R W A F K F F X O V D W U P L G E D Q H G L J K
V F K R, \$ O F R Q W L V Q K H W R Z D D P G R U H H V W R M D W W S B H R D E F K V F L S O L Q H
V R O Y S L C R J E O H P W W X G Z I Q H D S S U R S : U H L D W H R F X V R O E X L O G H Q H F W L Y H

U H V W R E U D D W L W H R R E U R Q Z P H Q W W U H D F D N Q Z L J W K I R D R V N L O O
EE4 @

& 5 H \ H J D Y X S G D R W A K H W D R W H F K D U W H F W R **D Q**

5 H \ HMD YXIS G DRVQHH



, Q Z R \$ % G D G H I R U H D G H U & K D L S W F H K R R O

0 L Q X W H V

' H F H P E % R D U H G H W L Q J

' D W D H Q G L P H

7 X H V S H F W D E D U @ " € D p @ À 6 0 D 1 0 @ 5 0 4 8 5 m € < 0 0 2 7 6 0 2 7 0 0 4 8 0 0 4 8 0 0 4 6 0 0 4 8 0 0 5 0 0 0 4 5 0 0 4 8 0 0 5 5 > T _ 0 1 E

\$ &(25HSRUWDMSRUW
& 5H\HVHSR R XG WDXWBQGXUULFXOXP

8SGDRVHXOWXHPHHRJWKZLEDDWWHQGUQLQLRWVQDQXDMKD W
ZLGDFVFWVRROODEBUBWONBYSLORFHV V

8SGDRVHXUULFXOXCPJ\$OFXUULFXOXPHHVERHDOLJVMCLQVWUXFWL RQDO
OH DGHWM DSWKH DQ6DUZHRUNWQU RDXJU ULDXOCLVXUULFXOXP
FKDQPHDWOKHRFZLEDRDFURVV FXDSSBXOCHDUQLSCHFLILQDOO\
WKCHURD-XP DQLVQD BGLVHRUHQYHVWVWJHRVLCPUQW3LORJUDP

%)XQGUDLVDLQNFUFH
5 *UDK BPLVFXWVHGSWBWQVQXDWKXQGUDHLYHLQW

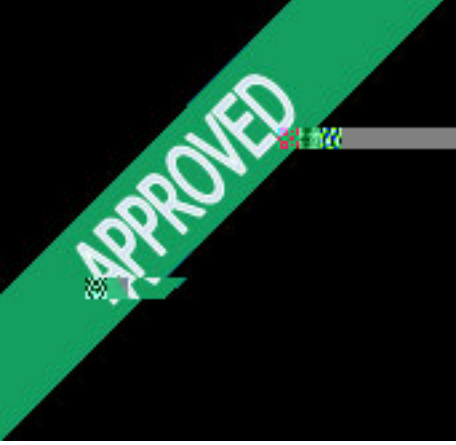
&)LQDQDFHGD FLO&RPIPVWWHH
- 3LFKDJJGYBHXSGDRVHKHDO DQGRPSHQV DQVLRQ 7KHQBVD
GLVFXRVKLRVQDQJQFHQWMLQFIHUWVBLHHPGEHMBHFRPHUWEHLRMBKH
VWBMK H DFDGHPIDFJKHERDZIGOHY LHZQGRWRQWKHODOU\
&RPSHQV DQVLRQ GXUWQVQXDPHWWLQJ

, , , &ORV LQHPV

\$ \$GMRXHBWLQJ
7KH BHLQB XUWEKHVULQVHFWUDQVD BVSHPQRWGRQDGMHFRQGHG
DQDSSURWVPHHWZLDVGMRXDQVH\$0

5HVSHFVXEDWWHG
- 6DQGRYDO





, Q Z R \$ % D G H I R U H D G H U & K D L S W F H K R R O

0 L Q X W H V

0 D U F % R D U H G H W L Q J

' D W D H Q % L P H

*RDØVUWXDO



, Q Z R R G

&



& K U L W M Y Q (2 U H S B Q E R D S I G R Y L B H I G E L F N F X V R I M R I C R O O R V Z R Q U F V

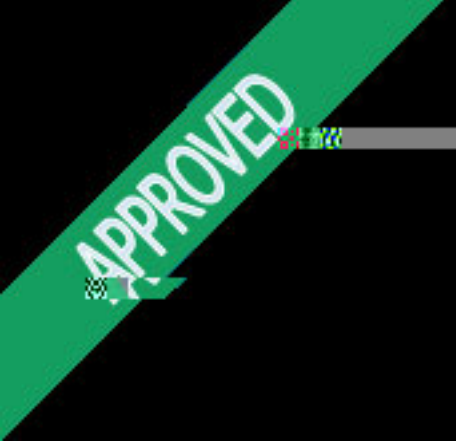
‡ Q G L V W U R B X W R R Q E I R R R N S V O H W H G

‡ & X U U F I Q V O O B Q V R V X W R L R Q K R P H U E L J F R Q V L D W V I Q W W P H Q W
U H D G L Q Q W U E Q W V X C H Q Q V J H P H Q W

‡ 5 H H Q W F U H Q S O I D R Q Q Q R P P L W W H D H G H U W K Z S O I O D G H S I O W D W
W K H Q H R D R H G H W % R D I U G Y L W S H G J W L E O S D V B P P L W W H H V

‡ 6 S D F S H O D Q Q Q G J U E D J P H D V X U R V O R F G D O W D V O F W O F S R Q Y H U W L Q J
D Q Q H W H R O D V V U R R H P H G B G I G Q V W S O E L I Q L Q H U W W S D G H V

‡ 3 D U W H F M S E R V D L R G T C 4 1 6 6 9 0 D d 2 . 0 8 3 0 B 8 8 1 0 6 < R 4 6 0 0 4 8 0 0 4 F 0 0 4 F 0 0 4 6 > T j / T 1 _ 0 1 T f () T j / C 2



, Q Z R \$ % G D G H I R U H D G H U & K L S W F H K R R O

0 L Q X W H V

- X Q % R D S J H G W U H D W

' D W H Q G L P H
6 D W X U S Q M D W 3 0

/ R F D W L R Q
Y L D R R P

7 U X V W B U H H W H Q W
% * L U O U H P R W : H L O V R U H P R (W G L P L Q H U L P R R W \$ O P R Q U H P R W + D U U L V
U H P R W 3 D W U U H P R R W O H D Q J X D O P R W G P L W K H P R O V B I R V H Q W K H P R O V H
0 0 \ Q D U H P R T W \$ O P R Q U H P R W H

7 U X V W S H E W H Q W
1 R Q H

* X H V W U H V H Q W
& 5 H \ H U H P R W 3 L F K D W G H P R W G D Q G R U D O R W H

, 2 S H Q L, Q W H P V

\$ 5 H F R \$ G W H Q G D Q F H

% & D O C H H H W W R U G H U
7 \$ O P R Q D O H P H G W R L O J E R D R U X V M I Q Z R \$ % G D G H I R U H D G H U V K L S
& K D U G W F H K R R O U G H O D W X U S Q \ # 3 0 D W
Y L D R R P

& \$ S S U R O Y L Q X W H V
- \$ O P R Q D G H P R W M F G S U W Y H L Q X W H R O P D \% R D O U H G W R Q J
% * L U O U H P R Q G K P G W L R Q
7 K H E R D O 2 7 (' X Q D Q L P R D S S U W Y H R W L R Q

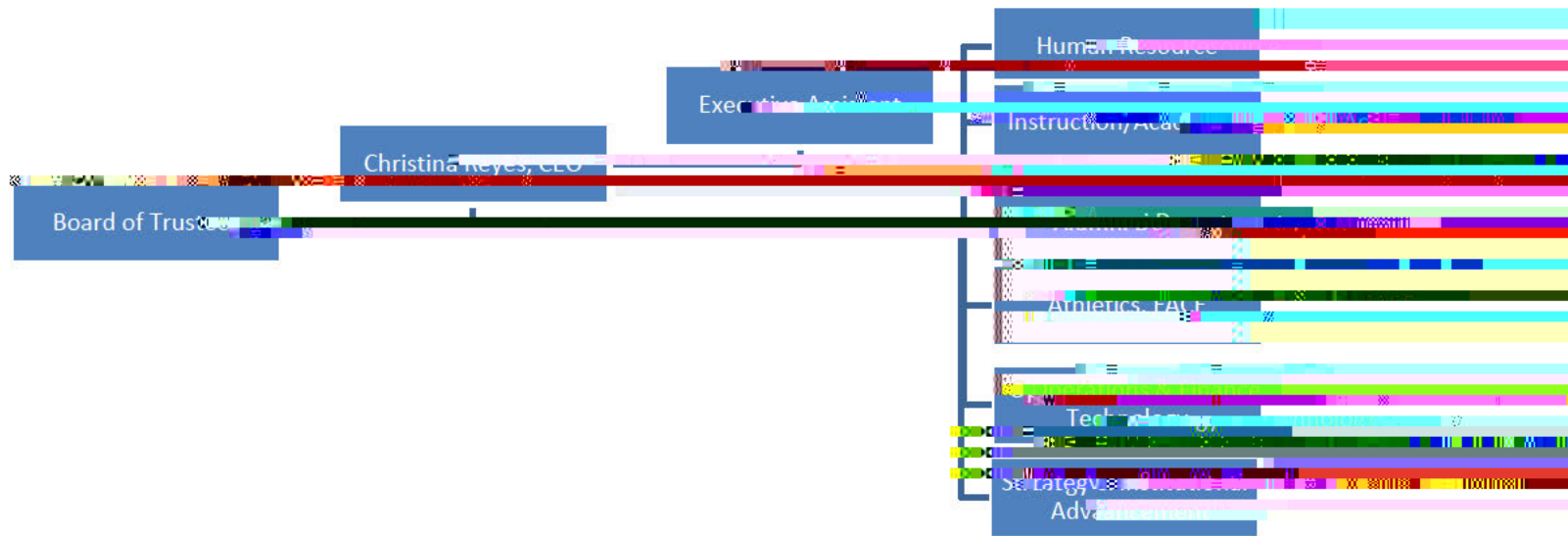
'LVFXVRIIRQORZQDQFHSLFV
&)2 &2RIILWFHDQVIRVIFQWLRQ
&XUUHQW

9 & OR V L W H P V

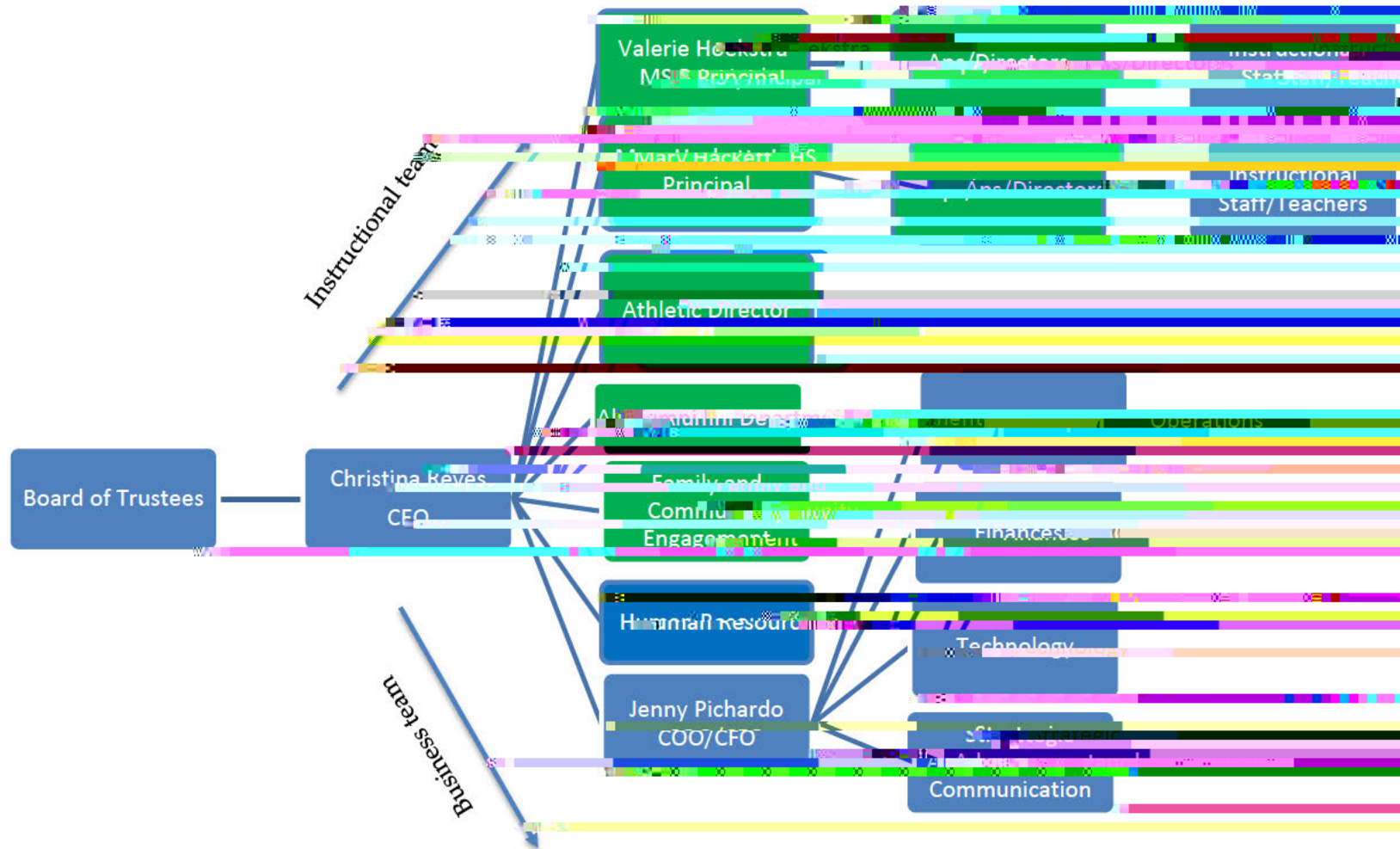
\$ \$ G M R X H Q W L Q J

7 K H E H L Q R X U W E K H V L Q W H W U D Q V D R X S H R W L R X O D G M H F R Q G H G
D Q C S S U R W H F H W Z L Q D G M R X D W H S O

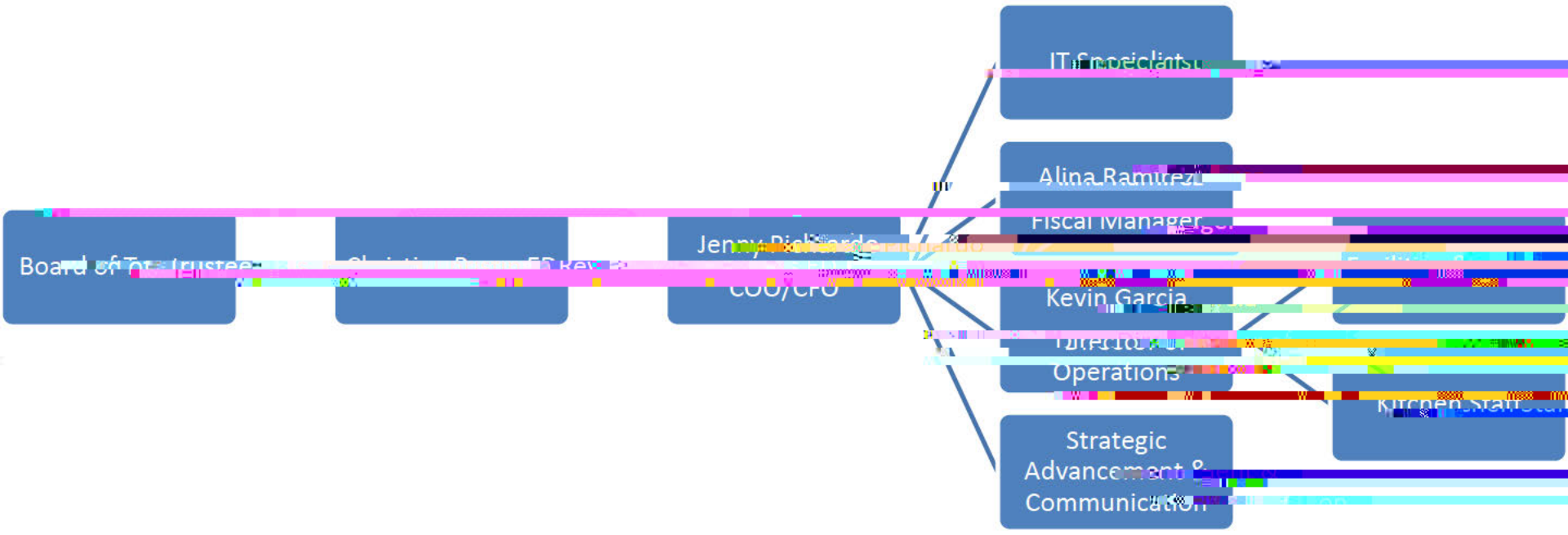
Organizational Chart 2019-20



Leadership Organization 2019 - 2020



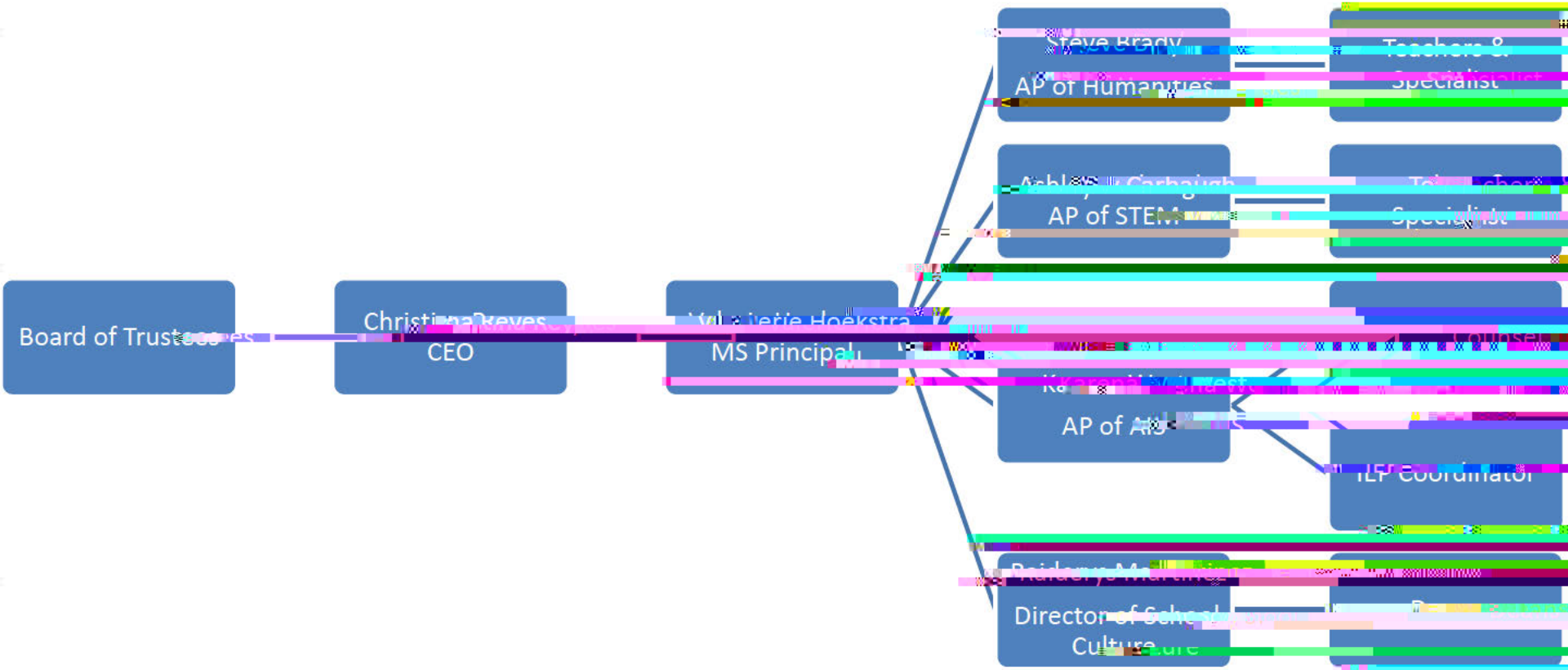
Operations Organization Chart 2019-20



Middle School Organizational Chart

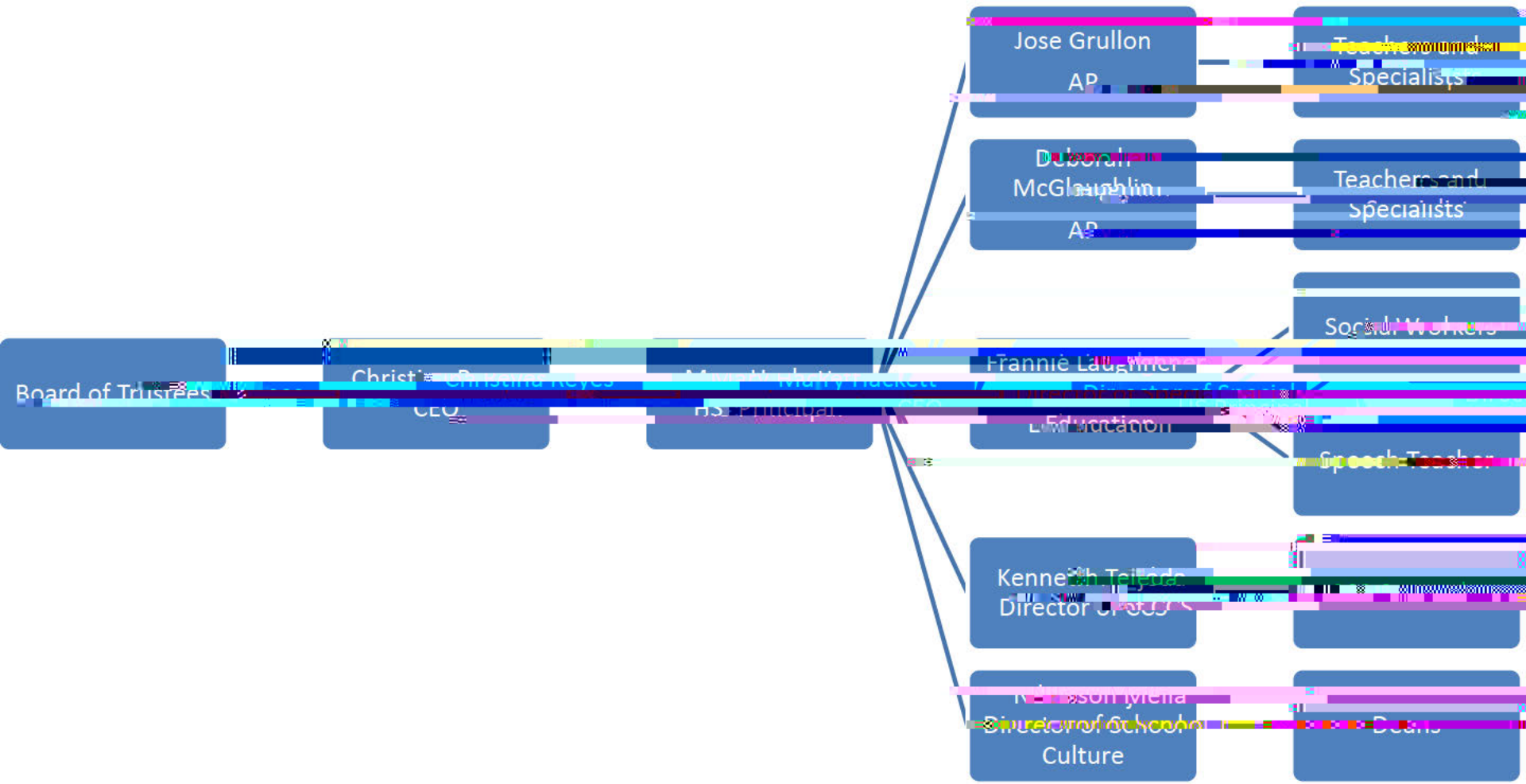
For Leadership Charter School

2019-20



High School Organization Chart 2019-2020

For Leadership, Character & Service



Inwood Academy for Leadership Charter School

2020-21 School Calendar

Draft *subject to change by administration due to COVID

Friday, June 26, 2020 - Friday, July 9, 2020	School closure for ALL
Monday, July 13, 2020 - Friday, July 24, 2020	LT, LT Directors/Operations/Shared Staff will work Monday thru Thursday's 8am-4pm
Monday, August 3, 2020 - Friday, August 7, 2020	LT, LT Directors/Operations/Shared Staff on vacation
Monday, August 10, 2020	LT, LT Directors, Operations, Shared Staff back to work full time (Monday thru Friday) 8am-4pm
Thursday, August 13, 2020 thru Friday, August 14, 2020	Parents Called
Tuesday, August 18, 2020	First day for all instructional staff
Monday, August 24, 2020	First day for all returning instructional staff (schedule determined by Principals)
Monday, September 7, 2020	LABOR DAY, SCHOOL CLOSED
Thursday, September 10, 2020	First Full day of 1st-5th grade (all grades)
September 30, 2020	First Day of Family Support Development for students
October 5, 2020	In Service Day- Whole School Professional Development for students
Monday, October 12, 2020	Professional Development for staff
Tuesday, October 13, 2020	First Full day of Hybrid Instruction (all grades K-5)
Tuesday, November 3, 2020	ELECTION DAY OBSERVED
Wednesday, November 25 through Friday, November 27, 2020	THANKSGIVING BREAK - SCHOOL CLOSED
Friday, December 11, 2020	PARENT TEACHER CONFERENCE
Wednesday, December 23, 2020	2020-21 Winter Dismissal
Thursday, December 24, 2020 through Friday, January 1, 2021	WINTER BREAK - SCHOOL CLOSED
Monday, January 4, 2021	First Day of PD - No school for students

I D g k < g s	Â Á Æ
! < g E P	Â Æ Â
d g Q Y	Â Á Æ
! < s	Â Ä Ä
k [l	Â Â Ê
0 \$ 0	Â • Ä Â Â





Certificate of Occupancy

CO Number: 123325421003

This certifies that the premises described herein conform substantially to the approved plans and specifications and to the requirements of all applicable laws, rules and regulations for the uses and occupancies specified. No change of use or occupancy shall be made unless a new Certificate of Occupancy is issued. This document, or a copy shall be available for inspection at the building at all reasonable times.

A	Block Number:	02201	Certificate Type:	Temporary
	Lot Number(s):	29	Effective Date:	1/13/2019
	Expiration Date:	02/11/2020		
	Building Identification Number (BIN):	1081903		
	Building Type:	Alberic		

This building is subject to this Building Code: 1968 Code
Zoning lot metes & bounds, please see BSVeb.

B	Construction classification:	1	(Prior to 1968 Code designation)
	Building Occupancy Group Classification:	E	(2014/2008 Code)
	Multiple Dwelling Law Classification:	None	
	No. of stories:	3	Height in feet: 33
			No. of dwelling units: 1

C Fire Protection Equipment:
Fire alarm system

D Type and number of open spaces
None associated with this finding.

E This Certificate is issued with the following legal limitation:
None

Outstanding requirements for obtaining Final Certificate of Occupancy:
There are 11 outstanding requirements. Please refer to BISWeb for further detail.
Borough Comments: None

Borough Commissioner

Commissioner

Certificate of Occupancy

CO Number: 1233251421003

Permitted Use and Occupancy

All Building Code occupancy group designations below are 2008 designations

Floor From To	Maximum persons permitted	Live load lbs per sq. ft.	Building Code occupancy	Dwelling Unit Rooming	Zoning
[REDACTED]					
END OF SECTION					



Borough Commissioner





FIRE DEPARTMENT
BUREAU OF FIRE PREVENTION
FIRE ALARM INSPECTION UNIT

9 METROTECH CENTER, BROOKLYN, N.Y. 11201-3857
TELEPHONE: (718) 999-2467 FAX: (718) 999-2802

LETTER OF RECOMMENDATION

CONTROL No.: 152462
DATE OF INSPECTION: 5/29/20
INSPECTOR (Print): C. Assenza
DOB APPLICATION (PW-1) No.: [REDACTED]
PLAN EXAMINATION, FD INDEX No., Account #

LOCATION INFORMATION:

HOUSE No. 3896 STREET NAME 10th Avenue BOROUGH Manhattan

WORK ON FLOORS: IDENTIFY THE SCOPE OF WORK COVERED BY THIS LETTER OF RECOMMENDATION.
FLOORS MUST CONFORM THE FOLLOWING DESIGNATIONS: ATT, BAS, CEL, MEZ, MZ1, PEN, PT1, PT2, PT3, (1) JOF, SUB, SC1, SC2, SC3

Cell, 1, 2, roof

GROUP CLASSIFICATION:
(IDENTIFY THE GROUP CLASSIFICATION OF THE ACCEPTANCE TEST)

Group E (Educational)

BUSINESS NAME:
(IDENTIFY THE BUSINESS NAME AS AT THE DATE OF THE ACCEPTANCE TEST)

3896 Tenth Ave Associates

JOB DESCRIPTION:
(IDENTIFY THE EXTENT OF WORK COVERED BY THIS LETTER OF RECOMMENDATION)

Installation of Manual/Automatic smoke/heat/carbon dioxide/pressure sensitive fire alarm system

1. CERTIFICATION OF ACCEPTANCE:

This Letter of Recommendation has been issued to confirm that the fire alarm (emergency, detection, automatic extinguishing, etc.) system and equipment filed under the Department of Building Conservation and the Fire Department Plan Examination identified above has been tested and accepted in accordance with the provisions of the current Codes, Regulations and Standards.

2. CONDITIONS ATTACHED TO THE LETTER OF RECOMMENDATION:

The Letter of Recommendation is a valuable document and it should be retained in a safe place until the Letter of Approval is generated and received.

Alex Spector
Director
Fire Alarm Inspection Unit

DISTRIBUTION: 1. WHITE - F.D. 2. YELLOW - OWNER

REPUBLICAN OF THE BOROUGH OF ST. LOUIS

DEPT. OF HEALTH

BOROUGH OF ST. LOUIS

3891 ST. LOUIS

ST. LOUIS, MO. 63103

NO CHANGES OF USE OR OCCUPANCY NOT CONSISTENT WITH THIS CERTIFICATE SHALL

Unless an approval for the same has been obtained from the Borough Superintendent, no change or
