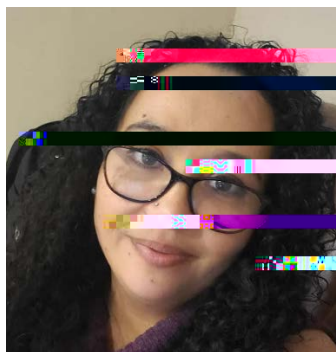


Unit Planning Part 4: Checkpoint C



The NYS Learning Standards for World Languages (2021) compel educators to use “a range of diverse texts, including authentic resources”. With this in mind and considering the state’s focus on diversity, equity, and inclusion, this workshop will focus on moving learners from the Intermediate Mid to the Intermediate High level of proficiency, by way of maximizing student production in the classroom, using materials that highlight and celebrate the people and cultures of the African Diaspora. Special attention is given, but not limited to, how to engage students in the analysis of works of art and poetry created by artists of African descent, while using the target language. The workshop will be presented in English with examples provided in Spanish.



Regina O’Neal has dedicated over twenty years to teaching. She currently teaches all levels of Spanish at the Baltimore Polytechnic Institute and serves as the World Language Department Chair. She is the advisor to two extracurricular clubs on her campus: Los Ingenieros- El club de la cultura hispana and the Cuauhtémoc chapter of the Spanish National Honor Society. Through the work of her school clubs, Regina has served the Latino community of Baltimore by way of volunteering for various non-profit organizations like CASA de Maryland and the Esperanza Center. Regina is an active member of several professional organizations including MFLA, NECTFL, AATSP, and ACTFL and is a regular presenter at conferences. She works closely with her school district and serves as a curriculum writer and professional development facilitator. Regina lives in Baltimore with her husband of twenty-one years, Marquise and is the proud mother of seven beautiful children.

A recording of the workshop will be uploaded to the OBEWL website for on-demand viewing by those unable to attend virtually. Those who attend the online workshop will be provided with a recording. No registration is necessary to view the recording.

Registration process: A maximum of 950 pre-registrations will be accepted. Registration will close by December 5th; there will be no same-day registrations. All registrants will be admitted into the workshop. Requests will be processed on a first-come, first-served basis. A registrant's work email address has been verified as being from a New York State educational institution. An email confirming their registration will be sent. Twenty-four hours before the workshop, all registrants will receive login instructions with the link to join the workshop.